



Australian Government

Department of Agriculture, Fisheries and Forestry
ABARES

Weekly Australian Climate, Water and Agricultural Update



11 October 2012

The full report is available from www.daff.gov.au/abares

Summary of key issues

- A cold front has brought wintry conditions to much of south-eastern Australia with severe frosts reported in some areas.
- The likelihood of an El Niño event has reduced. Most El Niño-Southern Oscillation (ENSO) indicators are neutral.
- Reduced grain yields are expected this harvest due to frost and dry conditions during much of the growing season.
- Water storage levels in the Murray–Darling Basin decreased by 85 gigalitres this week and are at 97 per cent of total capacity.
- The world wheat indicator price (US No. 2 hard red winter, free on board Gulf ports) averaged US\$369 a tonne in the week ending 9 October 2012, compared with US\$376 a tonne in the previous week.
- The world coarse grains indicator price (US No. 2 yellow corn, free on board Gulf ports) averaged US\$320 a tonne in the week ending 10 October 2012, similar to the previous week.
- The world canola indicator price (Rapeseed, Europe, free on board Hamburg) averaged US\$631 a tonne in the week ending 9 October 2012, similar to the previous week.
- For the week ending 7 October 2012, around 58 per cent of the US soybean crop has been harvested, with around 37 per cent of the crop rated as good/excellent, compared with 56 per cent at the same time last year according to the United States Department of Agriculture.
- The wholesale prices of fruit were generally higher and wholesale prices of vegetables were generally lower in the week ending 6 October 2012, compared with the previous week.

1. Climate

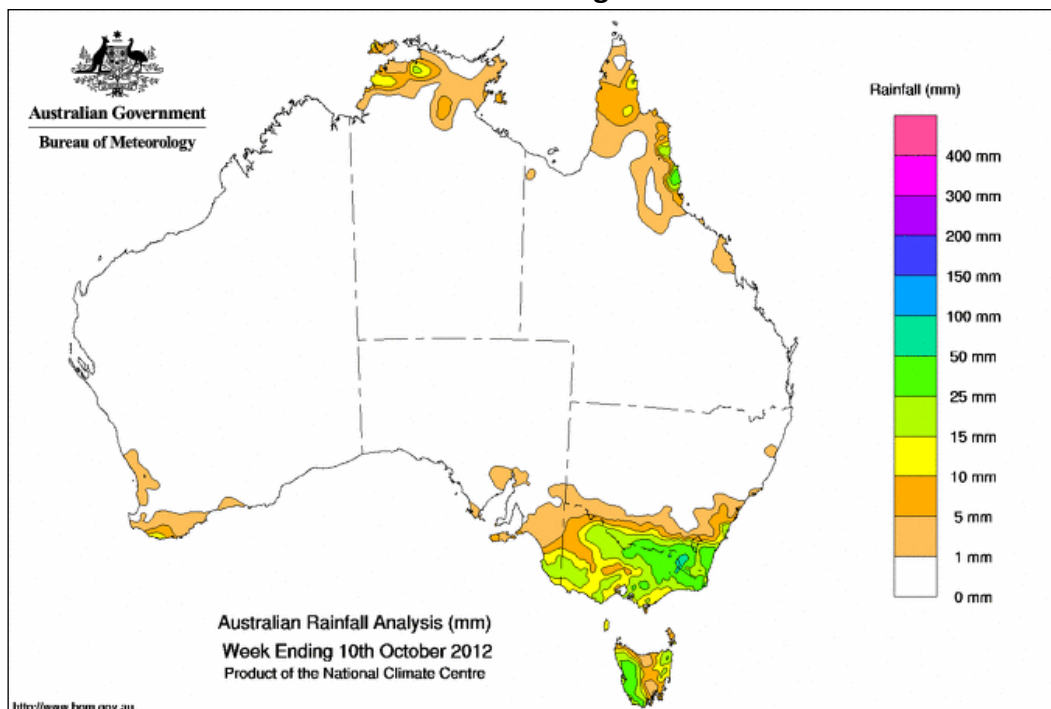
1.1. Notable events

- The likelihood of an El Niño event has reduced. The tropical Pacific Ocean temperatures, while still warmer than average, have continued to cool over the past fortnight and remain within the neutral range. Neutral conditions persist in the atmosphere.
- A cold front has brought wintry conditions to much of south-eastern Australia. Severe frosts have struck parts of South Australia with late season snow reported around Mount Lofty, Sevenhill, Hallett and Mount Remarkable. Some South Australian growers are cutting down frost-affected crops for hay.
- Heavy rain and thunderstorms are predicted for Queensland and north-eastern New South Wales today, with the possibility of hail. This rain may be of marginal benefit to late-maturing crops.
- Central and northern Australia have experienced early hot weather with some locations recording the warmest October temperatures in 10 to 15 years.
- The wheat harvest is beginning in Queensland. Yields may vary as many early crops were affected by frost and dry conditions.

1.2. Rainfall this week

For the week ending 10 October 2012, moderate rain fell over Tasmania, Victoria and southern New South Wales. Light rain fell over the Far North and parts of South Australia and Western Australia. The highest measured rainfall total for the week was 75 millimetres at Topaz, near Innisfail in Queensland. For further information, go to www.bom.gov.au/climate/current/weeklyrain.shtml.

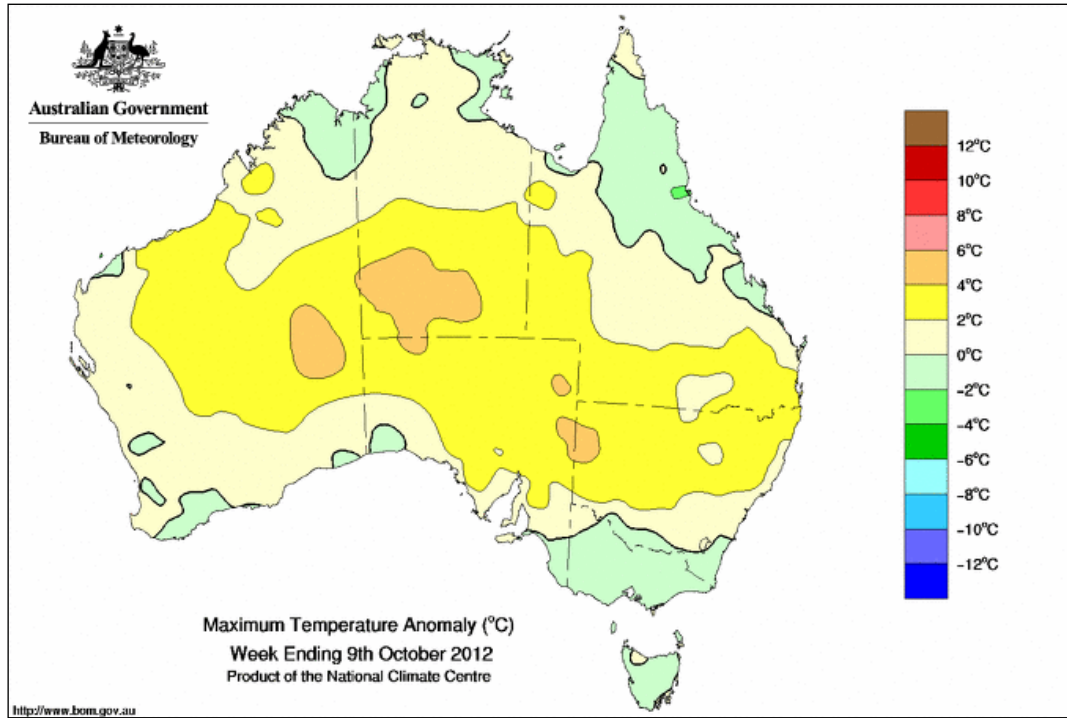
Rainfall for the week ending 10 October 2012



1.3. Temperature anomalies this week

Spatial temperature analyses are based on historical weekly temperature data provided by the Bureau of Meteorology. These temperature anomaly maps show the departure of the maximum and minimum from the long-term average. Temperature anomalies are calculated using high resolution gridded datasets from 1911 onwards. For further information on temperature anomalies, go to www.bom.gov.au/jsp/awap/.

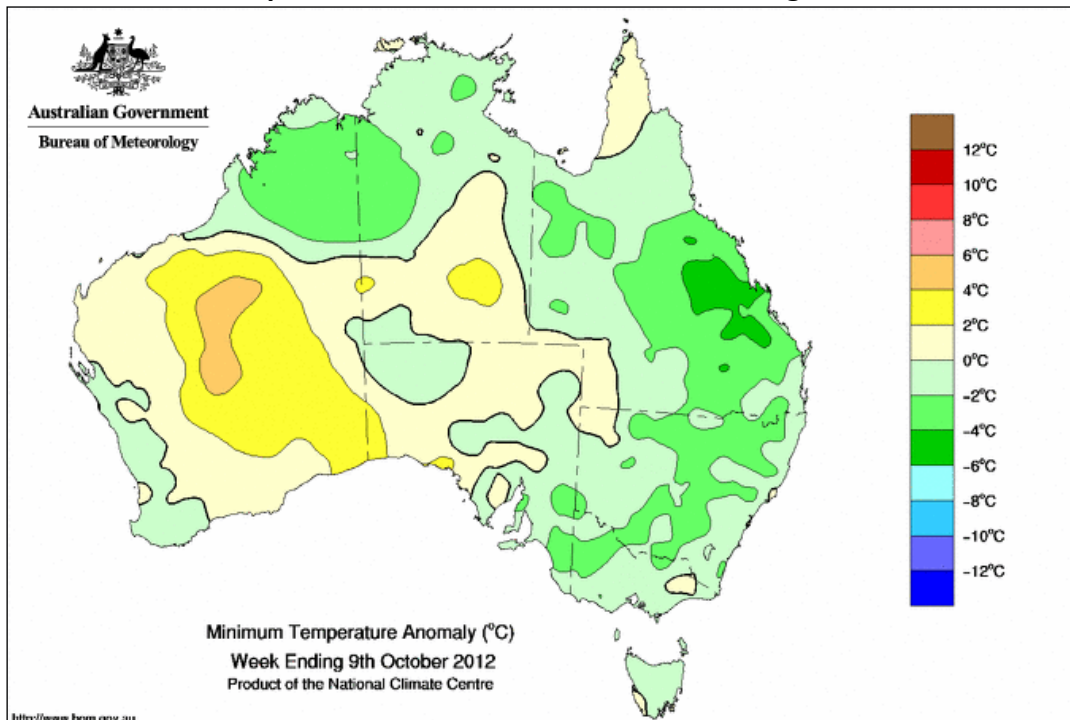
Maximum temperature anomalies for the week ending 9 October 2012



©Commonwealth of Australia 2012, Australia Bureau of Meteorology

Issued: 10/10/2012

Minimum temperature anomalies for the week ending 9 October 2012



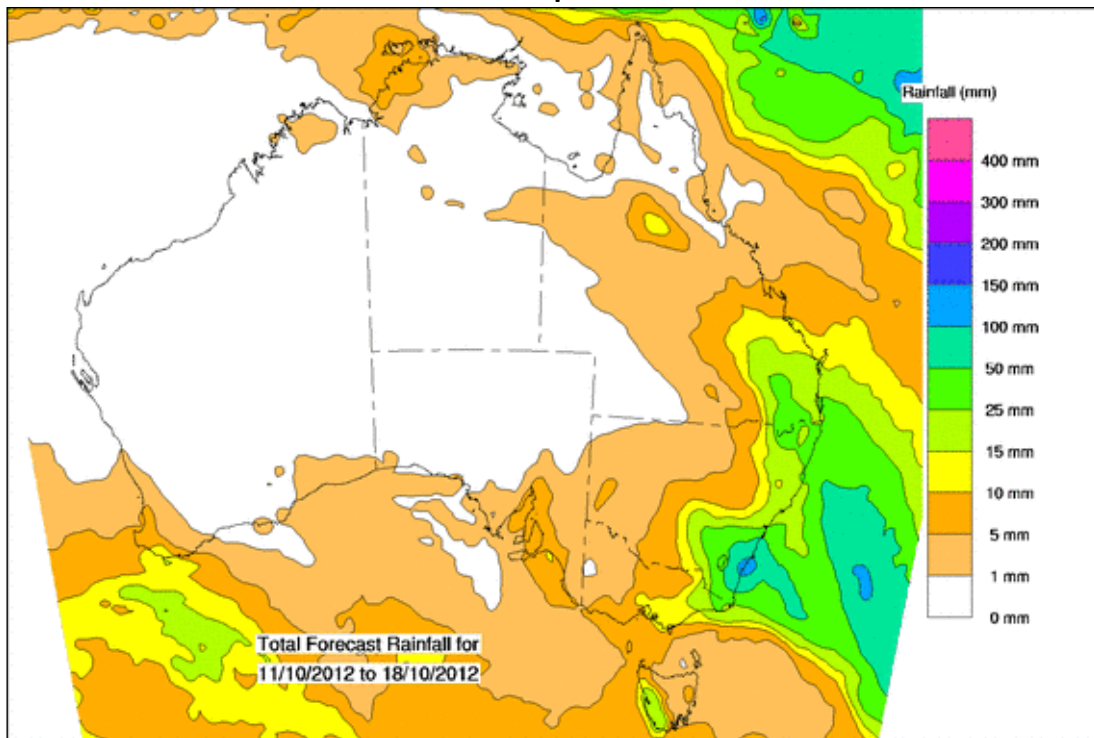
©Commonwealth of Australia 2012, Australia Bureau of Meteorology

Issued: 10/10/2012

1.4. Rainfall outlook

The rainfall forecast below is produced from computer models. As it contains no input from weather forecasters, it is important to also check local forecasts and warnings by the Bureau of Meteorology.

Total forecast rainfall for the period 11 to 18 October 2012



©Commonwealth of Australia 2012, Australia Bureau of Meteorology

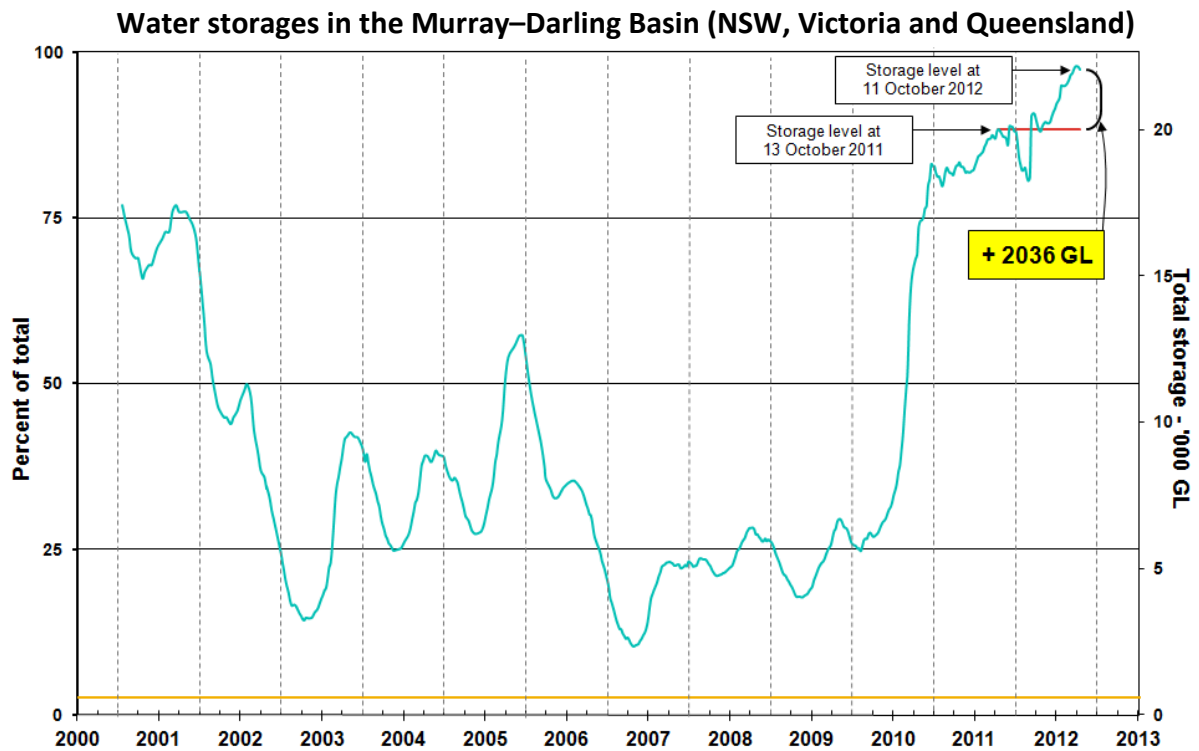
Issued: 10/10/2012

2. Water

2.1. Water availability

Water storage levels in the Murray–Darling Basin (MDB) decreased this week by 85 gigalitres (GL) and are at 97 per cent of total capacity. This is 9 percentage points, or 2036 GL, more than this time last year.

2.2. Water storages



Information on irrigation water available in the Murray–Darling Basin from 1 January 2001 to 11 October 2012 is shown above. The top horizontal (red) line indicates the storage level at the similar time last year. The bottom horizontal (orange) line indicates the amount of 'dead', or unusable, storage.

2.3. Water allocations

The current water allocations for the 2012–13 water trading season for licence holders in New South Wales, Victoria and South Australia water systems are summarised in the following table.

	Allocations at 03 October 2012 (%)	Allocations at 10 October 2012 (%)
NSW Murray Valley		
High security	100	100
General security	100*	100*
NSW Murrumbidgee Valley		
High security	95	95
General security	64*	64*
NSW Lower Darling		
High security	100	100
General security	100*	100*
NSW Macquarie Valley		
High security	100	100
General security	57*	58*
NSW Hunter Valley		
High security	100	100
General security	100	100
NSW Lachlan Valley		
High security	100	100
General security	0*	0*
NSW Lower Namoi		
High security	100	100
General security	14*	32*
NSW Upper Namoi		
High security	100	100
General security	100*	100*
NSW Gwydir Valley		
High security	100	100
General security	49*	150*
NSW Border Rivers		
High security	100	100
General security	100	100
NSW Peel Valley		
High security	100	100
General security	78*	78*
Victoria Murray Valley		
High reliability	81	81
Low reliability	0	0
Victoria Goulburn		
High reliability	100	100
Low reliability	0	0

	Allocations at 03 October 2012 (%)	Allocations at 10 October 2012 (%)
Victoria Campaspe		
High reliability	100	100
Low reliability	67	67
Victoria Loddon		
High reliability	100	100
Low reliability	0	0
Victoria Bullarook		
High reliability	100	100
Low reliability	100	100
Victoria Broken		
High reliability	47	47
Low Reliability	0	0
South Australia Murray Valley		
High security	100	100

*Carryover water may also be available.

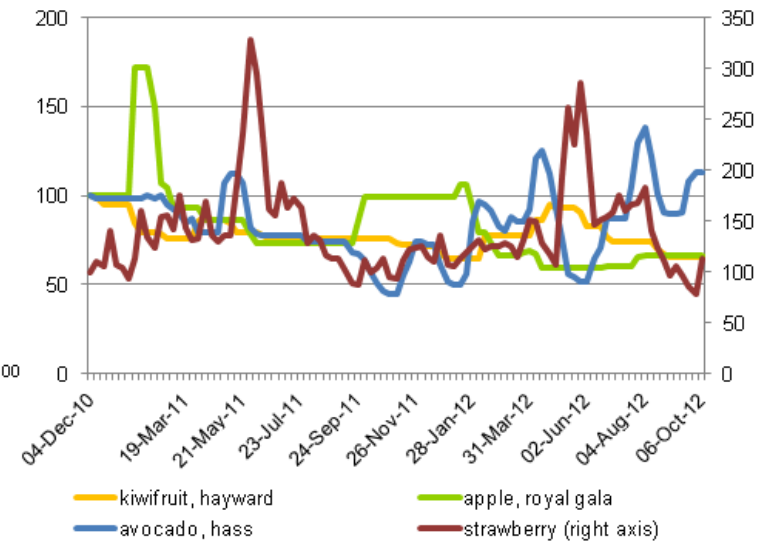
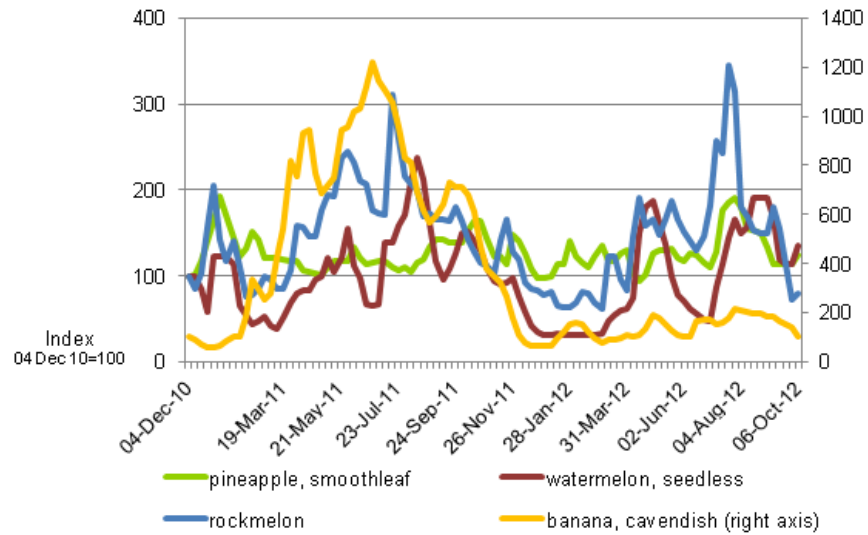
3. Commodities

3.1. Production and commodities

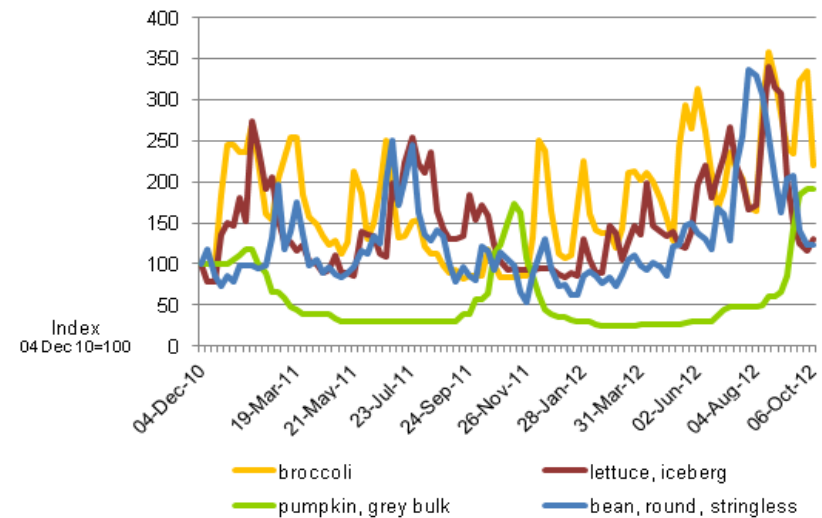
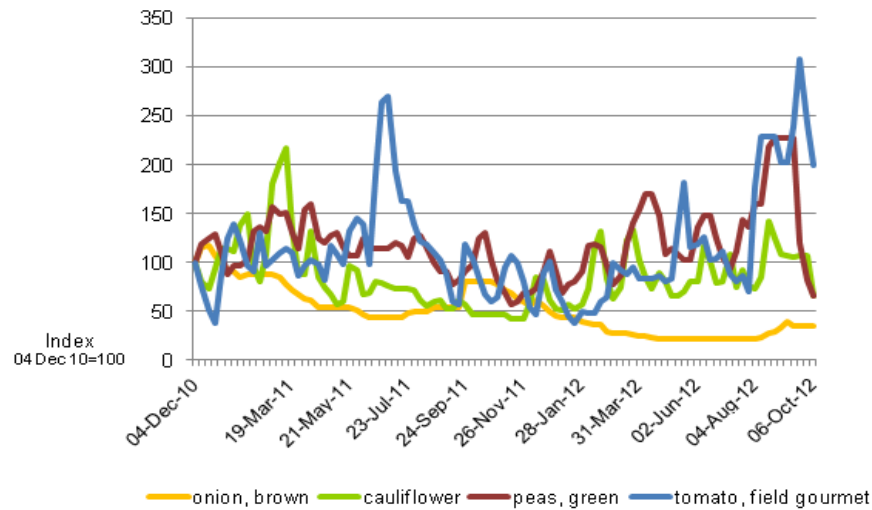
- The world wheat indicator price (US No. 2 hard red winter, free on board Gulf ports) averaged US\$369 a tonne in the week ending 9 October 2012, compared with US\$376 a tonne in the previous week.
- The world coarse grains indicator price (US No. 2 yellow corn, free on board Gulf ports) averaged US\$320 a tonne in the week ending 10 Oct 2012, similar to the previous week.
- The world canola indicator price (Rapeseed, Europe, free on board Hamburg) averaged US\$631 a tonne in the week ending 9 October 2012, similar to last week's price of US\$625 a tonne, but 6 per cent higher than the same time last year when the price was US\$594 a tonne.
- For the week ending 7 October 2012, around 58 per cent of the US soybean crop has been harvested, with around 37 per cent of the crop rated as good/excellent, compared with 56 per cent at the same time last year according to the United States Department of Agriculture. The US corn harvest is around 69 per cent complete, the US sorghum harvest is around 39 per cent complete and the US cotton harvest is around 21 per cent complete.
- The Australian canola indicator price (Portland, Victoria) averaged \$501 a tonne in the week ending 8 October 2012, compared with \$520 a tonne in the previous week.
- The world cotton indicator price (the Cotlook 'A' index) averaged US81.1 cents a pound in the week ending 10 October 2012, similar to the previous week.
- The world sugar indicator price (Intercontinental Exchange, nearby futures, No. 11 contract) averaged US21.5 cents a pound in the week ending 10 October 2012, 3 per cent higher than in the previous week.
- Fruit wholesale prices were generally higher in the week ending 6 October 2012, compared with the previous week, with the prices of pineapple (smoothleaf), watermelon (seedless), rockmelon and strawberry all rising. However, the wholesale price of banana (cavendish) was lower than the previous week.
- Vegetable wholesale prices were generally lower in the week ending 6 October 2012, compared with the previous week, with the prices of cauliflower, green peas, tomato (field, gourmet), and broccoli all falling. However, the wholesale price of iceberg lettuce was higher than the previous week.
- The Queensland young cattle indicator price (330-400 kg live weight C3) rose by 2 per cent to 363 cents a kilogram in the week ending 5 October 2012.
- There were mixed movements in the saleyard prices of lamb in the week ending 5 October 2012. The lamb indicator price rose by 2 per cent in both South Australia and Western Australia, and declined in Victoria (4 per cent) and New South Wales (3 per cent). The total number of lambs offered for sale was 8 per cent lower compared with the previous week.
- The Australian Eastern Market Indicator price for wool rose by 2 per cent in the week ending 4 October 2012 to 956 cents a kilogram clean. The total number of bales offered at sale rose by 24 per cent, compared with the previous week.

3.2. Recent movements in fruit and vegetable prices

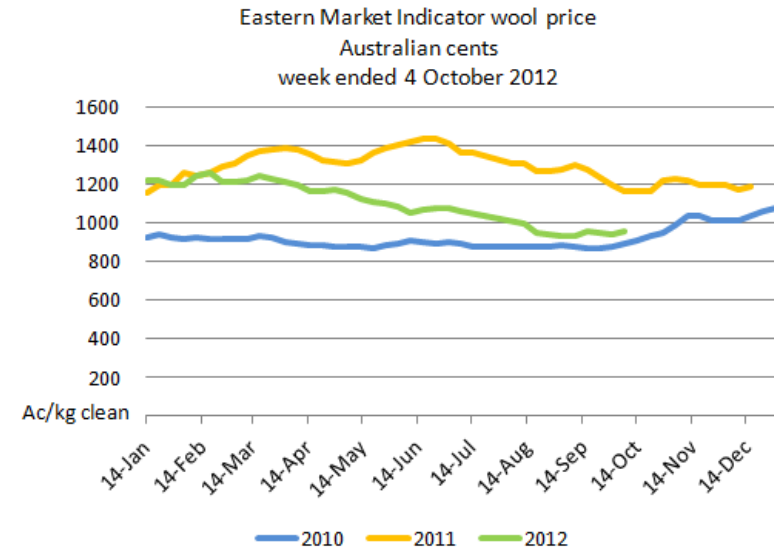
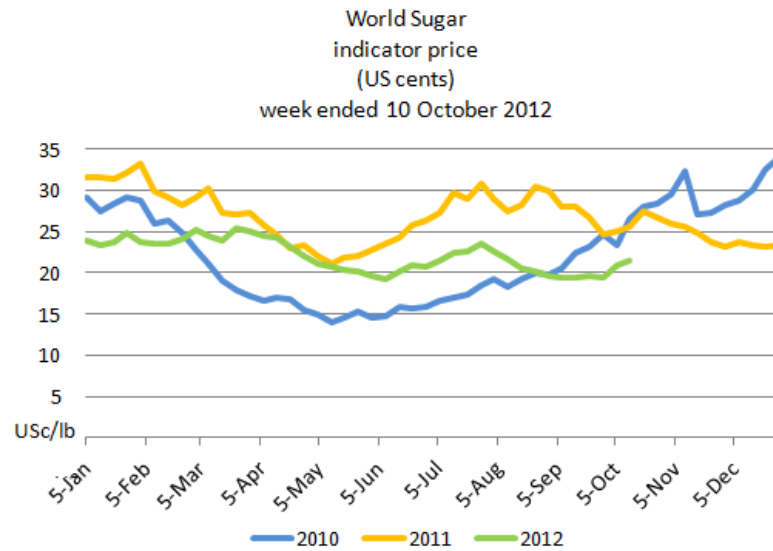
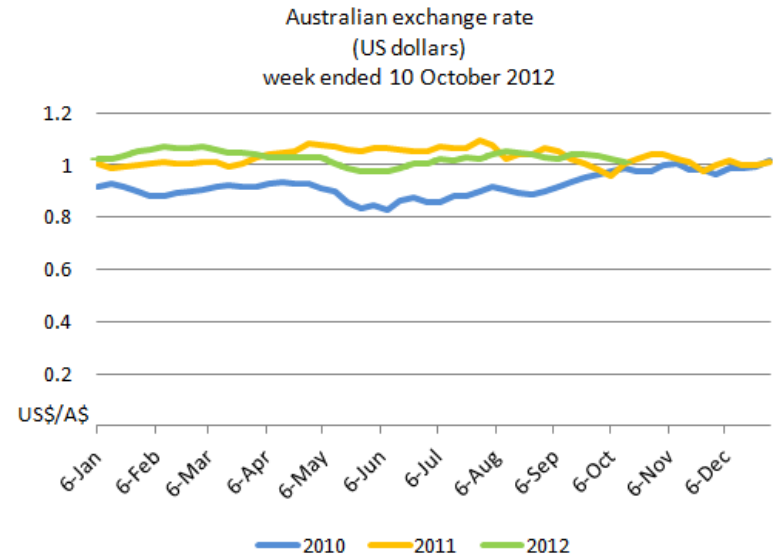
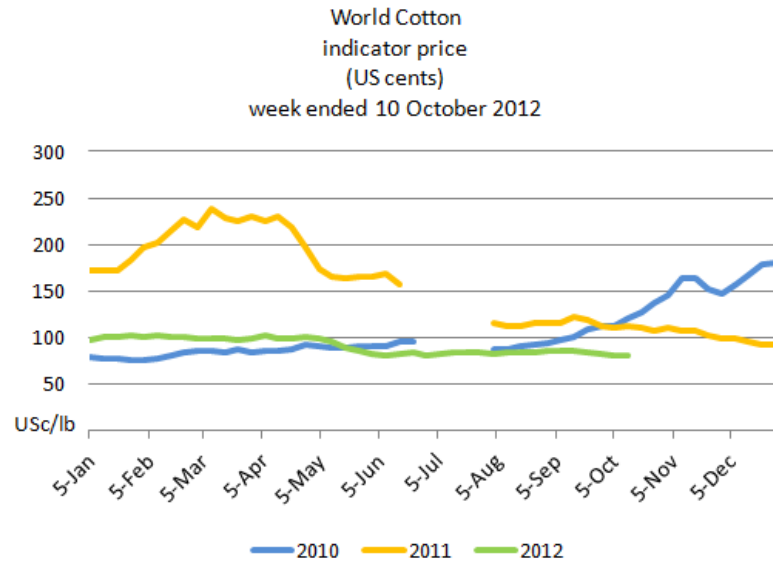
Weekly wholesale prices for selected fruit, Melbourne market



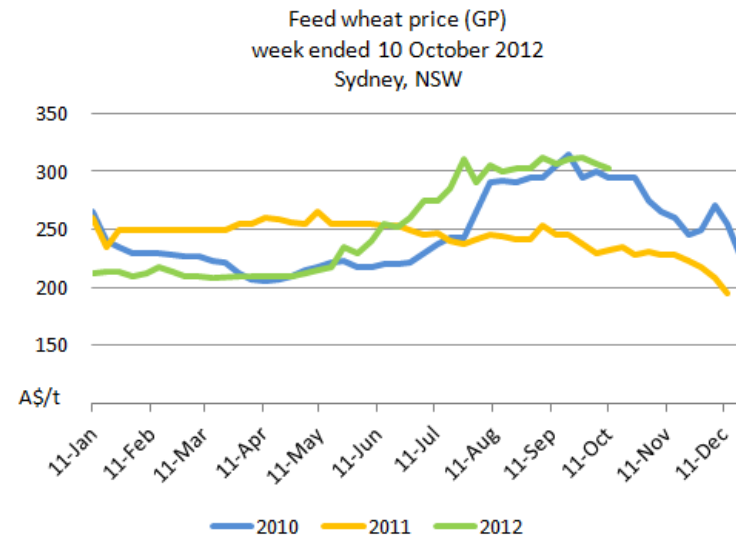
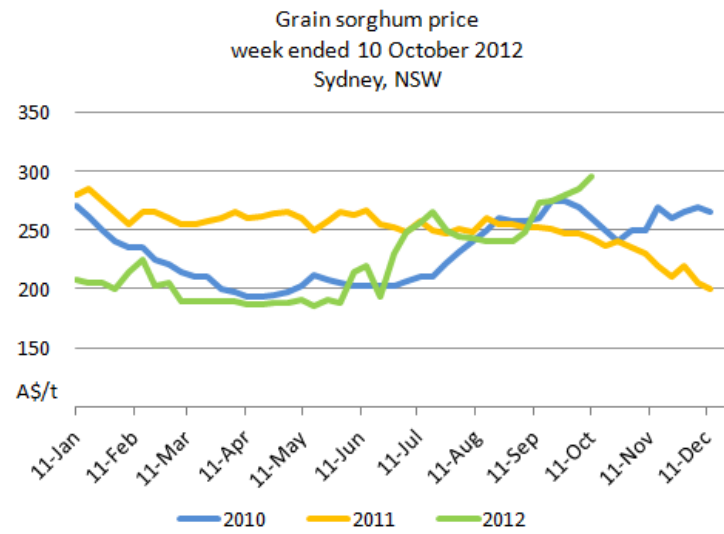
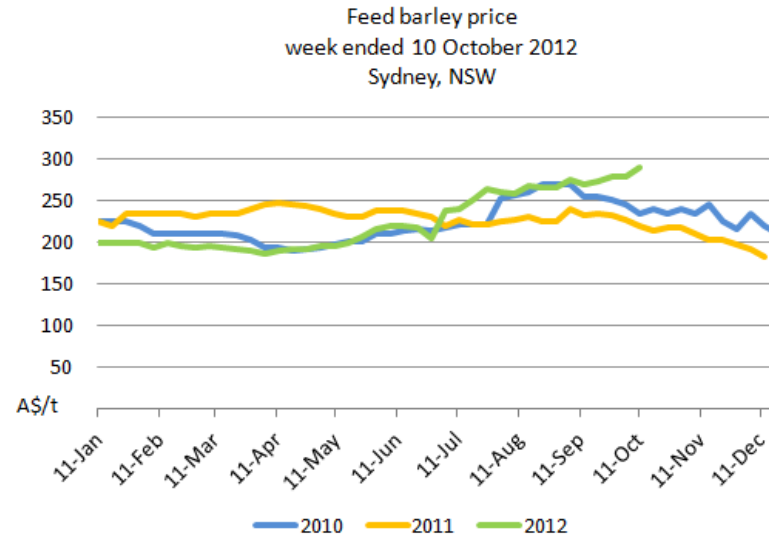
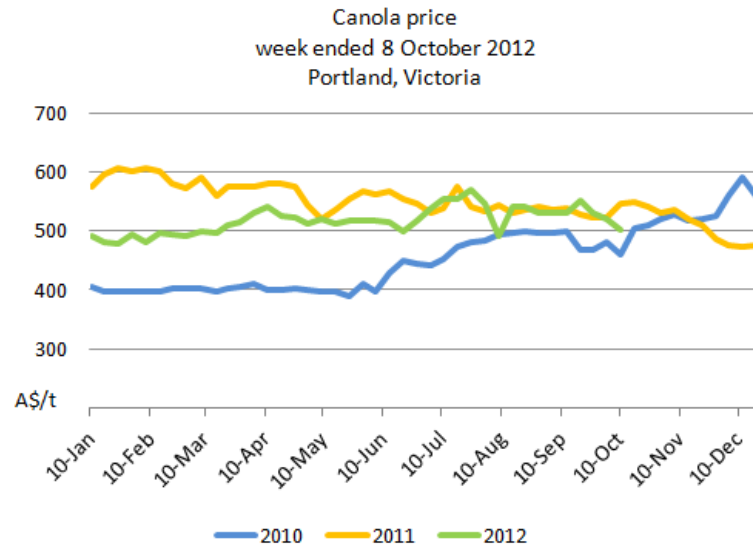
Weekly wholesale prices for selected vegetables, Melbourne market



3.3. Selected world indicator prices

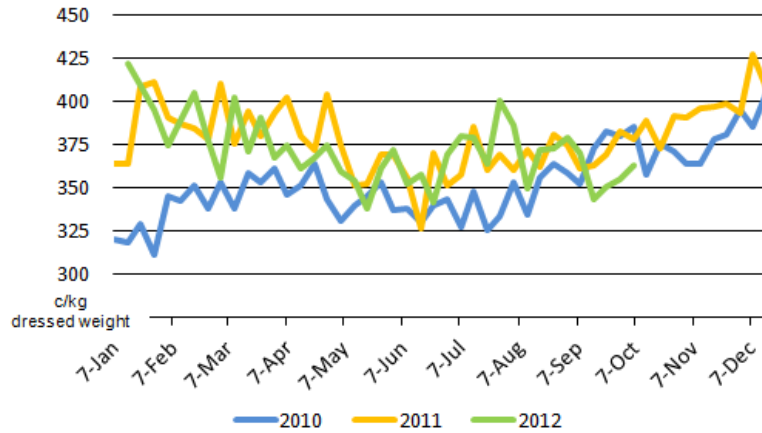


3.4. Crop indicator prices

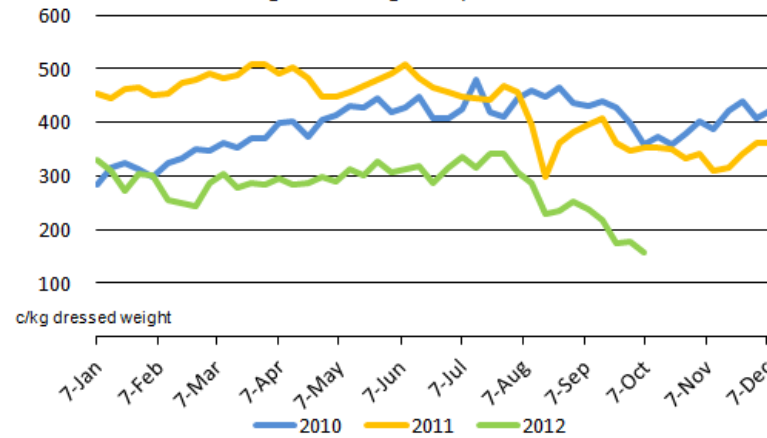


3.5. Livestock indicator prices

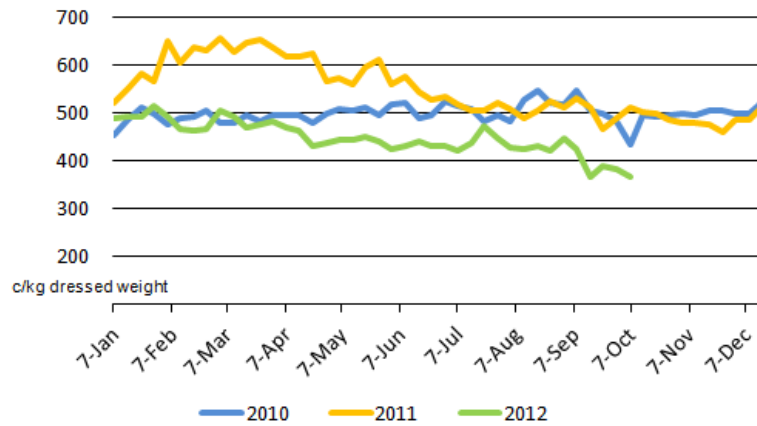
Young cattle indicator price
(330-400 kg live weight C3)
week ended 5 October 2012
QLD



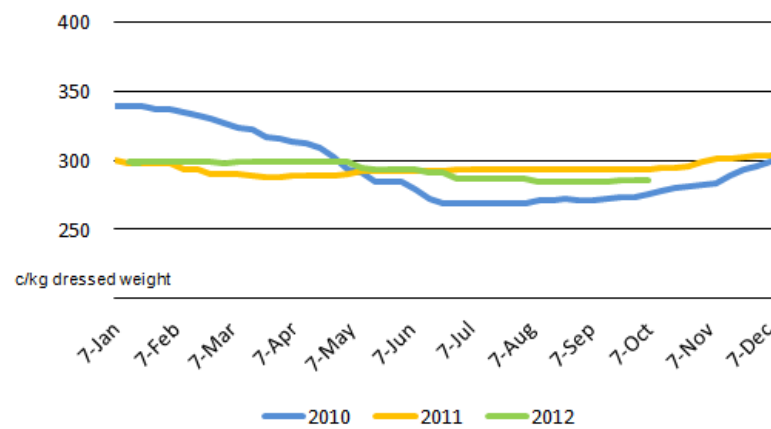
Mutton indicator price
(18-24 kg fat score 2-3)
week ended 5 October 2012
Weighted Average Saleyard Price - Victoria



Lamb indicator price
(18-22 kg fat score 2-4)
week ended 5 October 2012
Weighted Average Saleyard Price - Victoria



Baconer pig indicator price
GI 60-75 kg
week ended 5 October 2012
NSW



4. Data attribution

Climate

Bureau of Meteorology

- Weekly rainfall totals: www.bom.gov.au/jsp/awap/rain/index.jsp
- Monthly and last 3-months rainfall percentiles: www.bom.gov.au/jsp/awap/
- Temperature anomalies: www.bom.gov.au/jsp/awap/
- Rainfall forecast: www.bom.gov.au/jsp/watl/rainfall/pme.jsp
- Seasonal outlook: www.bom.gov.au/climate/ahead
- Drought statement: www.bom.gov.au/climate/drought/drought.shtml
- ENSO Wrap-Up: www.bom.gov.au/climate/enso/
- Soil moisture (BoM, CSIRO and the former Bureau of Rural Sciences): www.eoc.csiro.au/awap/

Water

New South Wales

- New South Wales Water Information: <http://waterinfo.nsw.gov.au/>
- New South Wales Office of Water, Department of Environment, Climate Change and Water: www.water.nsw.gov.au/Home/default.aspx
- Available water determinations register: www.wix.nsw.gov.au/wma/DeterminationSearch.jsp?selectedRegister=Determination
- Snowy Hydro: www.snowyhydro.com.au/lakeLevels.asp?pageID=47&parentID=61&grandParentID=4

Queensland

- Sunwater: www.sunwater.com.au
- seqwater: <http://seqwater.com.au>

South Australia

- SA Water: www.sawater.com.au/SAWater/Environment/TheRiverMurray/River+Murray+Levels.htm
- South Australian Department of Water: www.waterforgood.sa.gov.au/

Victoria

- Goulburn–Murray Water: www.g-mwater.com.au

Water trading

- Waterexchange: www.waterexchange.com.au

Commodities

Fruit and vegetables

- Datafresh: www.datafresh.com.au

Mutton, lambs, wheat, barley and grain sorghum

- The Land: hardcopy or online at <http://theland.farmonline.com.au/markets.aspx>

Cattle, mutton, lambs and pigs

- Meat and Livestock Australia: www.mla.com.au/Prices-and-markets

Canola

- Weekly Times: hardcopy